

38 Clifton Rise, Abergele, LL22 7DN

£219,950

🛏 3 🚿 1 🚗 1

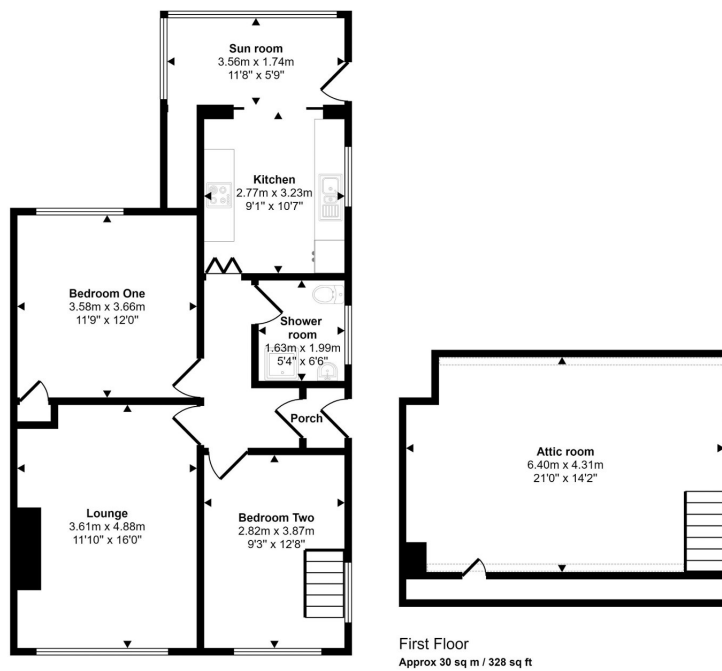


A semi detached bungalow located on Clifton Rise, Abergele, being within walking distance of the town centre, Tesco supermarket and the local golf club. The coast is within one mile together with easy access to the A55 Expressway. This property is a blank canvas and has the benefit of a large lounge, fitted kitchen, shower room, two bedrooms and a spacious attic room with window and radiators. With gas central heating, double glazing, driveway parking and neat gardens to the front and rear plus the bungalow is available with no forward chain.

Key Features

- No forward chain
- Two/three bedrooms
- Close to town centre
- Driveway parking
- Council tax band - C
- Semi detached bungalow
- Sun room
- Private rear garden
- EPC rating - C
- Freehold

Approx Gross Internal Area
101 sq m / 1092 sq ft



Ground Floor
Approx 71 sq m / 764 sq ft

First Floor
Approx 30 sq m / 328 sq ft

Denotes head height below 1.5m

This floorplan is only for illustrative purposes and is not to scale. Measurements of rooms, doors, windows, and any items are approximate and no responsibility is taken for any error, omission or mis-statement. Icons of items such as bathroom suites are representations only and may not look like the real items. Made with Made Snappy 360.